

*"Superior Products are the User's Advantage."*

## SERVICE MANUAL FOR CIRCLE DYNAMICS INC. DLG - TOTE MIXER DRIVE (2018 Model)

### WARNING

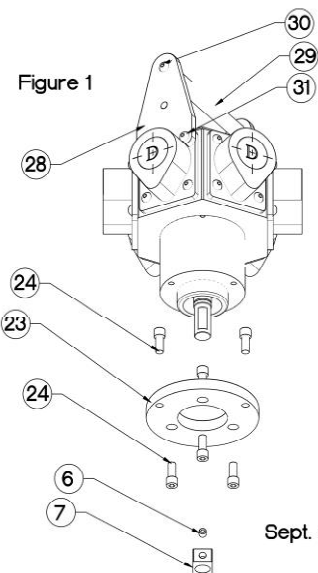
This product is intended for use in an industrial mix room environment. It is the user's responsibility to ensure that all forms of external energy are removed from the product prior to servicing to eliminate the risk of being injured by rotating parts during service.

### FAILURE MODES

This product is only to be used in accordance with Circle Dynamics instructions for use and applications. Any other application may result in serious injury.

### INSTALLATION (Refer to Fig. 1)

- Add Loctite 242 (loctite blue) onto set screw (6). Then align setscrew (6) in key (7) with flat on air motor shaft.
- Slide key onto motor shaft and push up tight to top shoulder. Securely tighten setscrew (6).
- Screw adaptor (23) to the underside of air motor using 3 cap screws (24).
- Set motor on the top plate (13) while aligning the key into the keyway in top of driveshaft (8).
- Align holes in adaptor and top plate and install three socket head cap screws (24). Tighten securely.
- Attach drive unit to top of tank with a counter-clockwise turn until tight.
- Lift mixer prop in the tote to engage the 4 L-shaped fingers in the drive shaft (8) with a counter-clockwise twist



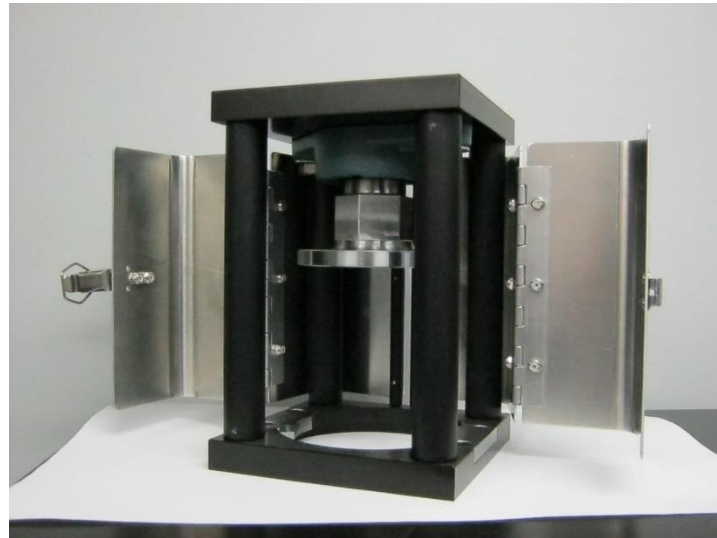
Sept. 9/2019

**Connect air supply to appropriate port and adjust flow control to set speed.**

## REBUILD INSTRUCTIONS FOR CIRCLE DYNAMICS DLG DRIVE UNIT

### DISASSEMBLY

- Disconnect any energy source and remove motor and drive unit by turning the mixer shaft clockwise to disengage, then turn the DLG clockwise to disengage from the tote.
- Remove cap screws (24) from adaptor (23) and remove air motor.
- Remove 2 bolts (9) and washers (10).
- Remove set screw (6) from coupling (25). Remove coupling (25) from the drive shaft (8).
- Remove snap ring (12) and press drive shaft (8) out from the bearing housing (11).
- Remove snap ring (27) from bearing housing (11).
- Using the notches on the bottom of the bearing housing (11) press the bearing (26) out of the Housing (11).
- Clean and dry all components and prepare for re-assembly.



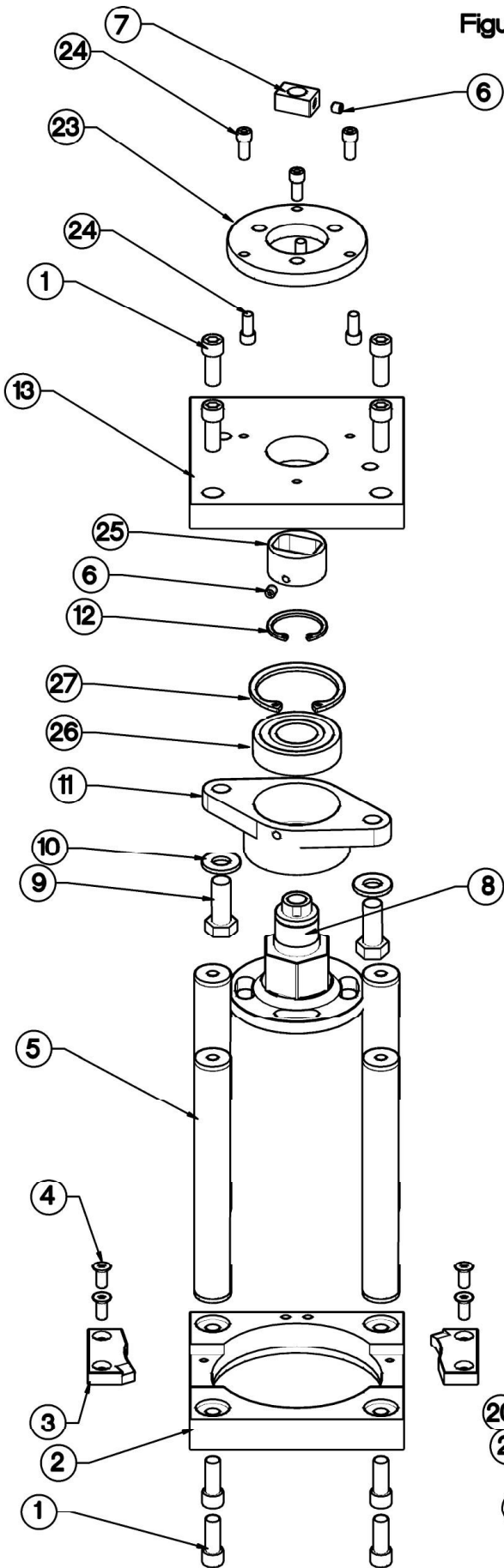
### ASSEMBLY

- Press new bearing (26) into the bearing housing (11).
- Install snap ring (27) into the Bearing housing (11).
- Press drive shaft (8) into the bearing housing (11) and install snap ring (12).
- Install coupling (25) over the drive shaft (8). Add Loctite 242 (Loctite blue) to set screw (6) and install set screw into coupling (25). Tighten securely.
- Insert drive shaft / bearing assembly into place and install 2 bolts (9) and washers (11) tighten by hand only.

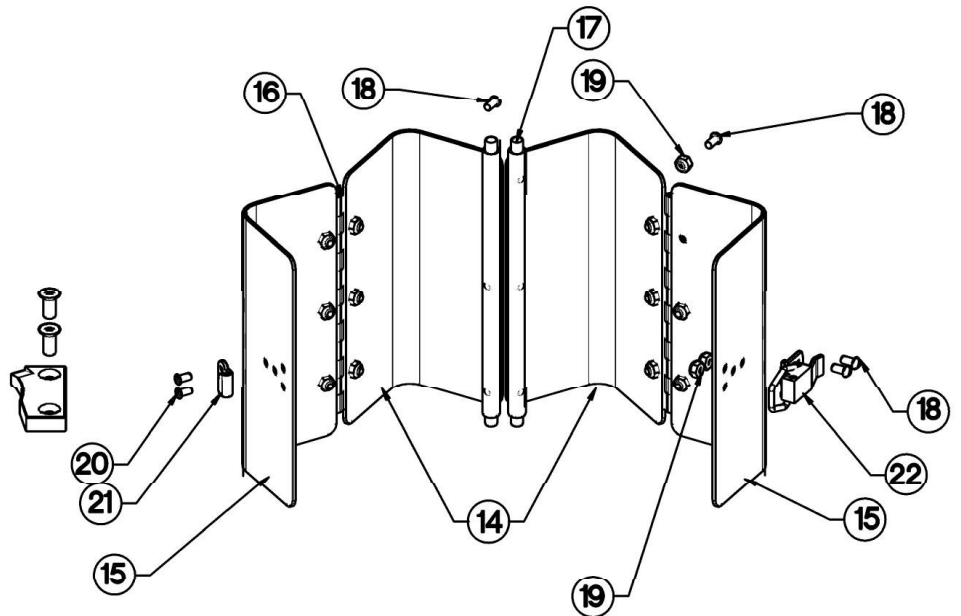
Refer to installation instructions for assembly to air motor.

- Once motor has been installed onto the DLG mixer, tighten 2 bolts (9) securely.

Figure 2



KEY	PART #	QTY.	DESCRIPTION
1	60313	8	CAP SCREW
2	59131	1	BOTTOM PLATE
3	59129	2	LOCK
4	60314	4	FLAT HEAD SCREW
5	59128	4	POST
6	60418	2	SET SCREW
7	60378	1	KEY
8	60403	1	DRIVE SHAFT
9	60315	2	BOLT
10	60316	2	FLAT WASHER
11	60399	1	BEARING BLOCK
12	60402	1	SNAP RING
13	59130	1	TOP PLATE
14	60212	2	FINGER GUARD REAR
15	60213	2	FINGER GUARD FRONT
16	60319	2	HINGE
17	60185	2	HINGE PIN
18	60320	20	CAP SCREW
19	60321	14	LOCK NUT
20	500-027	2	RIVET
21	500-025	1	CATCH
22	500-009	1	STRIKE
23	59132	1	MOTOR ADAPTOR
24	60322	6	CAP SCREWS
25	60379	1	COUPLING
26	60400	1	BEARING
27	60401	1	SNAP RING
28	59133	2	HANDLE BRACKET
29	60184	1	HANDLE GRIP
30	60354	2	CAP SCREWS
31	60353	4	CAP SCREWS



## TECHNICAL DATA

Maximum Speed: 1100 RPM

Weight < 12 lbs.


Guard: Fully Attached

Housing: Anodized Aluminum

Bearing: Self Aligning Sealed Ball

## THE CIRCLE DYNAMICS INC. WARRANTY AND DISCLAIMERS

Items sold by Circle Dynamics Inc. and or all Doyle Products are warranted to be free from defects in material and workmanship for a period of one year from the date of purchase, provided said items are used according to Doyle Products said usages. Circle Dynamics Inc. liability is limited to the repair of, refund of purchase price paid for, or replacement in kind of at the sole option of Circle Dynamics Inc., any items proved defective, provided the allegedly defective items are returned to Circle Dynamics Inc. prepaid. There are no other warranties, expressed or implied, except as stated herein. There are no implied warranties of merchantability of fitness for a particular purpose, which are damages, if the possibility of such incidental or consequential damages has been made know to Circle Dynamics Inc., or is the direct result of a failure of a Doyle Product. Circle Dynamics Inc. reserves the right to discontinue the manufacture of any product or change product materials, design or specifications without notice.

<p>Copyright 2015 Circle Dynamics Inc. All rights reserved. Models and specifications subject to change without notice.</p>	
	<p><b>Circle Dynamics Inc.</b> 171 A Rink Street, Suite 150 Peterborough, Ontario, Canada K9J 2J6 Tel: 1-705-768-3338 Fax: 1-705-740-1975 Email: <a href="mailto:jdoyle@circledynamicsinc.com">jdoyle@circledynamicsinc.com</a> Web: <a href="http://www.circledynamicsinc.com">www.circledynamicsinc.com</a></p>